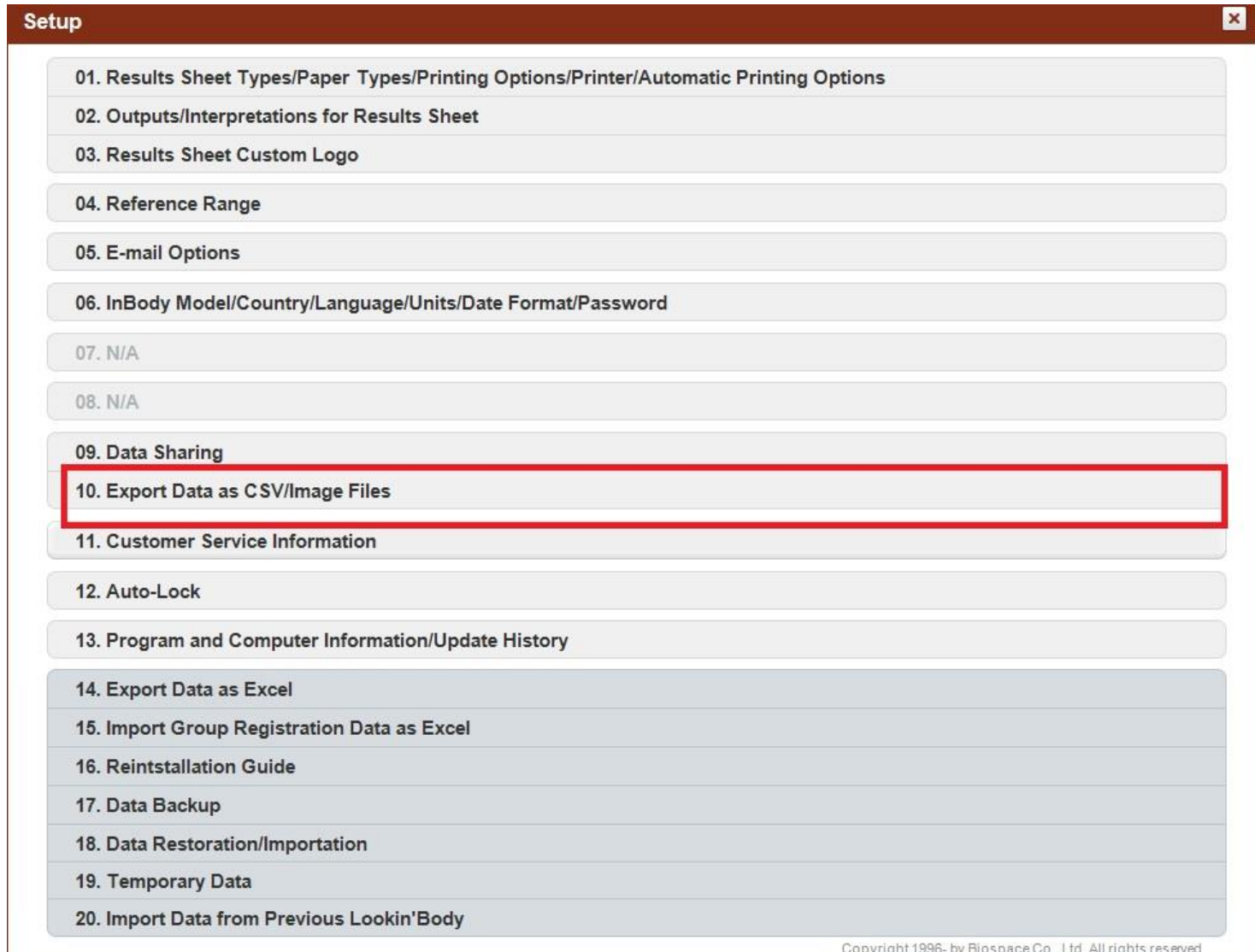


# InBody

LB120 CSV/ Auto Export

1. Go to the Setup Menu on the LB120 and choose option 10

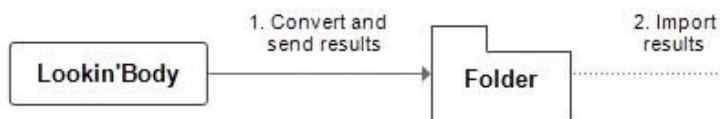


2. Select Edit to choose what folder you wish the results to be automatically saved into and press OK. ( you can choose between an image file or CSV or both)

## 10. Export Data as CSV/Image Files

To export data to EMR you must first specify a destination folder.

1. Convert results in Lookin'Body to image/CSV file and save to your destination folder.
2. Results in the folder are now available for use in EMR.



For EMR interfacing, first convert results to an image or CSV file,

Convert results automatically to an image file after each InBody Test?

Yes  No

Image Destination Folder

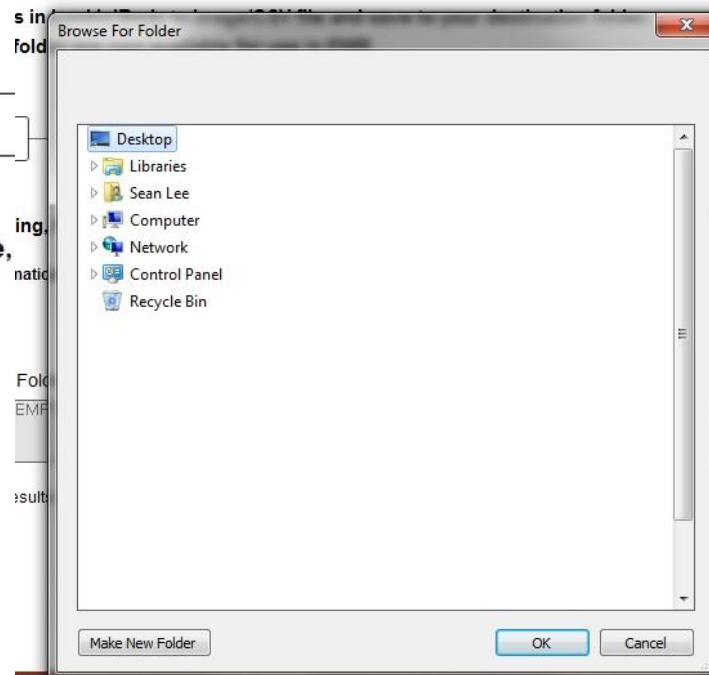
C:\w\LookinBody120\EMR\IMAGE

Edit

\* Convert remaining results to image files?

Yes  No

Save



3. Select Yes to setup the results to automatically export out to this folder after every test. You can also convert the already existing data if would like as well

### 10. Export Data as CSV/Image Files ✕

To export data to EMR you must first specify a destination folder.

1. Convert results in Lookin'Body to image/CSV file and save to your destination folder.
2. Results in the folder are now available for use in EMR.

```
graph LR; A[Lookin'Body] -- "1. Convert and send results" --> B[Folder]; B -.- "2. Import results" --> C[EMR];
```

For EMR interfacing, first convert results to an image or CSV file, then specify a destination folder.

Convert results automatically to an image file after each InBody Test?

Yes  No

Image Destination Folder Edit

C:\WLookinBody120WEMRWIMAGE

\* Convert remaining results to image files?

Yes  No

Convert results automatically to CSV files after each InBody Test?

Yes  No

CSV Destination Folder Edit

C:\Users\Wisean\Desktop\CSV Sample

\* Convert remaining results to CSV files?

Yes  No

Save

4. Once you hit save, it will start converting any existing data if you chose to do so.

**10. Export Data as CSV/Image Files**

To export data to EMR you must first specify a destination folder.

1. Convert results in Lookin'Body to image/CSV file and save to your destination folder.
2. Results in the folder are now available for EMR.

Lookin'Body

1. Convert a  
send result

**For EMR interfacing, first convert**

Convert results automatically to an image file?

Yes  No

Image Destination Folder

C:\W\LookinBody120\WEMR\WIMAGE

\* Convert remaining results to image files?

Yes  No

**Save**

Converting.

Convert to Image File

Convert to CSV File

Cancel

Save

folder.

CSV files after each InBody Test?

No

Edit

W SampleW

files?

No

5. Now Every time you take a test thought LB120, it will save a copy of that result in the designated folder.

